

Our Theory of Change

is rooted in a commitment to an ongoing process of educating ourselves, engaging and listening to those most impacted by the issues we work on and in taking collective action to make change.

We are committed to a process of consistently learning and unlearning about the systems of power and oppression that influence our lives and the world around us. We believe that we need to understand systems in order to effectively change them.

We believe that it is important to be clear in our messaging, and so we don't shy away from occupying difficult conversational spaces. However, we believe that finding common ground is an important element of change-making, and so we strive to do so with all who want to make a positive difference in the world.

We believe in challenging ourselves to consistently create more welcoming spaces for people to engage in a process of interrogating the root causes of global injustice. By doing this we aim to help grow and work with a more critically informed network of change makers across Ireland.

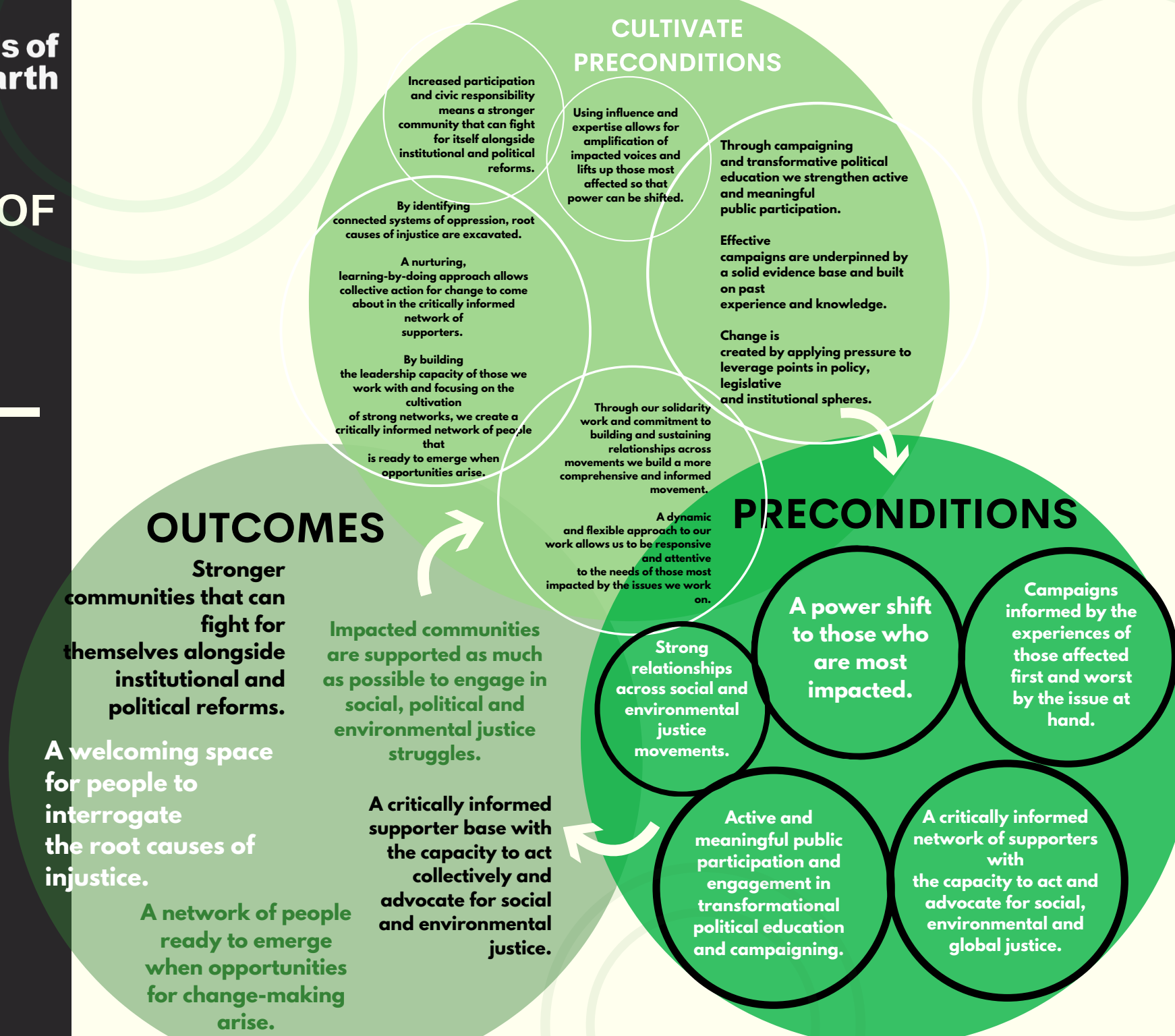
When individuals and groups are nurtured to engage in a process of critically informing themselves as well as being supported to learn-by-doing, they are more likely to take effective collective action to bring about changes in their own communities and as part of a mass political movement.

When policy makers are the target of both mass movement campaigns and targeted, evidence based advocacy, they are compelled to bring about changes in policy and practice.

OUR THEORY OF CHANGE

How we believe change happens

Cycle Diagrams show how specific items are related to one another, forming a repeating pattern.



OUTCOMES

Stronger communities that can fight for themselves alongside institutional and political reforms.

A welcoming space for people to interrogate the root causes of injustice.

A network of people ready to emerge when opportunities for change-making arise.

Impacted communities are supported as much as possible to engage in social, political and environmental justice struggles.

A critically informed supporter base with the capacity to act collectively and advocate for social and environmental justice.

CULTIVATE PRECONDITIONS

Increased participation and civic responsibility means a stronger community that can fight for itself alongside institutional and political reforms.

Using influence and expertise allows for amplification of impacted voices and lifts up those most affected so that power can be shifted.

Through campaigning and transformative political education we strengthen active and meaningful public participation.

Effective campaigns are underpinned by a solid evidence base and built on past experience and knowledge.

Change is created by applying pressure to leverage points in policy, legislative and institutional spheres.

By identifying connected systems of oppression, root causes of injustice are excavated.

A nurturing, learning-by-doing approach allows collective action for change to come about in the critically informed network of supporters.

By building the leadership capacity of those we work with and focusing on the cultivation of strong networks, we create a critically informed network of people that is ready to emerge when opportunities arise.

Through our solidarity work and commitment to building and sustaining relationships across movements we build a more comprehensive and informed movement.

A dynamic and flexible approach to our work allows us to be responsive and attentive to the needs of those most impacted by the issues we work on.

PRECONDITIONS

Strong relationships across social and environmental justice movements.

A power shift to those who are most impacted.

Campaigns informed by the experiences of those affected first and worst by the issue at hand.

Active and meaningful public participation and engagement in transformational political education and campaigning.

A critically informed network of supporters with the capacity to act and advocate for social, environmental and global justice.